



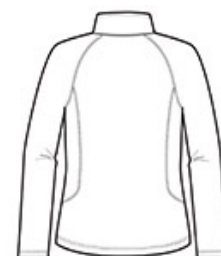
# Eddie Bauer® Ladies 1/2-Zip Base Layer Fleece. EB237



This smooth-faced fleece is designed for next-to-skin comfort. Sleek and functional, it easily transitions from outdoor pursuits to everyday wear. Flat seam details. Reverse coil zipper. Open cuffs and hem. Contrast Eddie Bauer logo heat transfer on right hem. Made of 9.3-ounce, 100% polyester fleece. \*\*

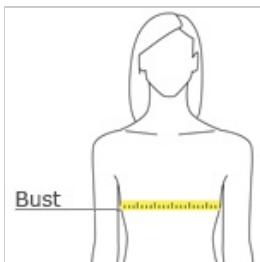


front



back

## HOW TO MEASURE



### BUST

With arms down at sides, measure around the upper body, under arms and around the fullest part of the bust.

## SIZE CHART

	XS	S	M	L	XL	2XL	3XL	4XL
Size	2	4/6	8/10	12/14	16/18	20/22	24/26	28/30
Bust	32-33	34-35	36-37	38-40	41-43	44-46	47-49	50-52

## COLOR INFORMATION

Black PMS NTR Black	Cobalt Blue PMS No match	Iron Gate PMS 7540 C	Pink Lotus PMS 7635 C	White PMS White